

FOR LEASE BY OWNER

NEW TO MARKET | UNIQUE LEASE OPPORTUNITY | BROKERS WELCOME

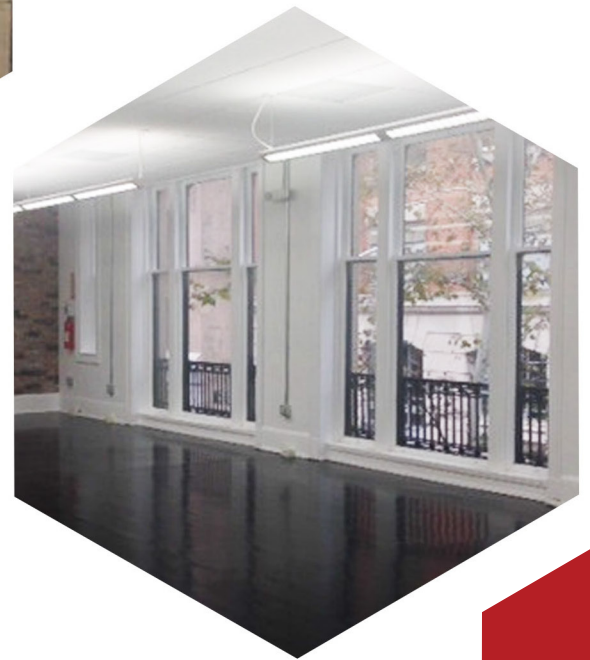
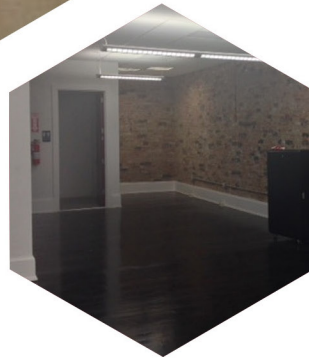


COMMERICAL SPACE

3,800
sq/ft.

Contact:

Nigel Davidson
(202) 322-3618



38 South Street

Baltimore, Maryland 21202

DOWNTOWN CBD BALTIMORE, MARYLAND

COMPLETE SECOND FLOOR WITH ABUNDANT LIGHTING

Boutique office building in the heart of the commercial business district. Convenient access to the Harbor and most major highways. Recently updated prime studio space with off street parking available. Exposed brick and spacious large windows. Separate entrance with a dedicated bathroom. Additional space is available for storage.

Convenient location on a major interesection with high visibilty and easy access to major thoroughfares.

| | |
|----------------------|-------------------------------|
| FLOOR / AREA: | Complete 2nd Floor; 1,650 RSF |
| POSSESSION: | Immediate |
| TERM: | Variable |
| RENTAL: | \$20.00 NNN |



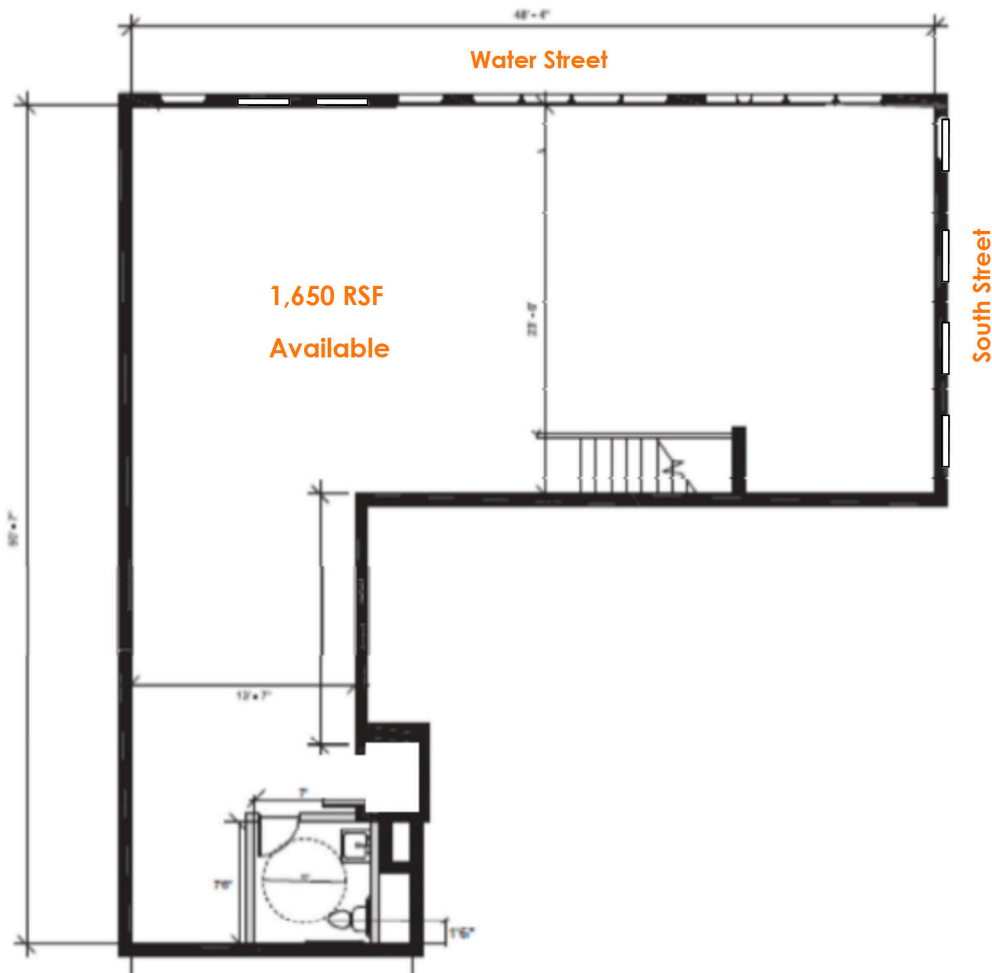
5290 Shawnee Road, Suite 300
Alexandria, VA 22312
nicholasdevelopment.com

Nigel Davidson
ndavidson@nicholasdevelopment.com
Office: (202) 464-6319 x1210
Mobile: (202) 322-3618



FOR LEASE BY OWNER

NEW TO MARKET | UNIQUE LEASE OPPORTUNITY | BROKERS WELCOME



DOWNTOWN CBD BALTIMORE, MARYLAND

COMPLETE SECOND FLOOR WITH ABUNDANT LIGHTING

Boutique office building in the heart of the commercial business district. Convenient access to the Harbor and most major highways. Recently updated prime studio space with off street parking available. Exposed brick and spacious large windows. Separate entrance with a dedicated bathroom. Additional space is available for storage.

Convenient location on a major intersection with high visibility and easy access to major thoroughfares.

| | |
|----------------------|-------------------------------|
| FLOOR / AREA: | Complete 2nd Floor; 1,650 RSF |
| POSSESSION: | Immediate |
| TERM: | Variable |
| RENTAL: | \$20.00 NNN |



5290 Shawnee Road, Suite 300
Alexandria, VA 22312
nicholasdevelopment.com

Nigel Davidson
ndavidson@nicholasdevelopment.com
Office: (202) 464-6319 x1210
Mobile: (202) 322-3618

